



COMPOSTING TOILET MANUAL

TABLE OF CONTENTS

Intro	1
What's in the Box?	2
Safety	2
Installation	3
<i>Fan Power</i>	3
<i>Motor Power</i>	3
Power.....	4
Venting.....	5
How to Use.....	6
Urination	7
Urine Disposal	8
Solids Use.....	9
Solids Disposal	10
Tech Specs	11



WHO WE ARE

The OGO™ Toilet is a waterless composting toilet designed to be the most aesthetic product that fits in the smallest of spaces.

WHY WE EXIST

As the world of RVs, Vans, Caravans, Camper Trailers, Tiny Homes, Sheds and other “off grid” locations grow, so does the need for an efficient and affective waterless toilet. Thus, OGO™ was born!

HOW WE'RE BETTER

While other composting toilets are limited in their capabilities, OGO™ has it all! We're smaller, sleeker, modern, and leave a smaller footprint than the leading composting toilets. We make everyday life easier.



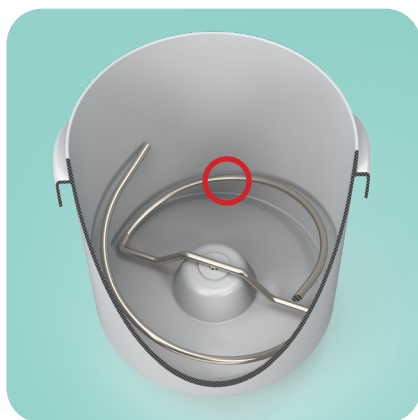
WHAT'S IN THE BOX?

- The OGO™ Toilet
- Mounting Screws
- Vent Hose - 1.5m Length
- 12V Power Cable
- Compost Toilet Cleaner Stimulant (Spray Bottle)

SAFETY WARNINGS



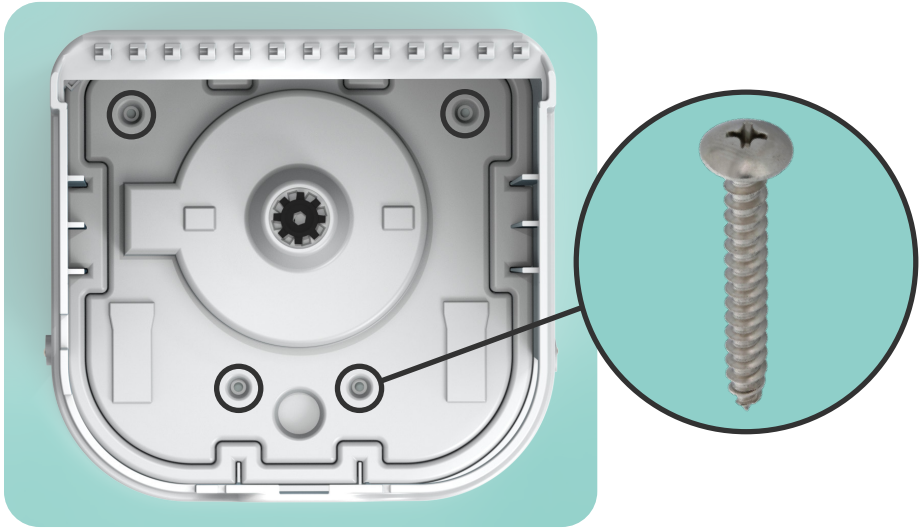
This is a **pinch point**!
Be careful when closing the bowl, fingers could become caught.



The **agitator bar** spins for 2 minutes while mixing after a solids use.
Avoid reaching into the bin while the bar is spinning.

INSTALLATION

Place screws into mounting holes and use a screwdriver or drill to tighten the four screws (sheet metal screws) to attach the base of the toilet to the floor.



Fan Power

- Always on
- 20 mA rating

Motor Power

- On when mixing
- 5 Amp rating

Average daily draw

Fan: **0.48 Ah/day**

Motor: **0.6 Ah/day**

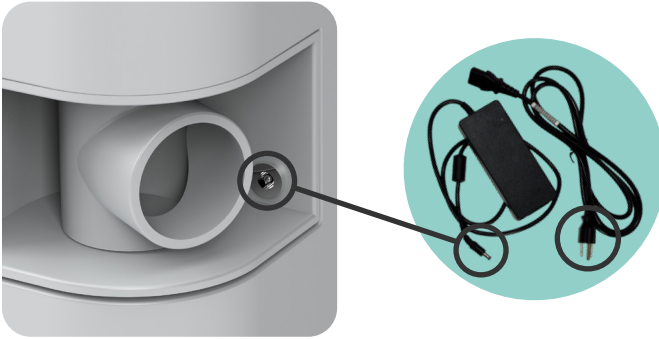
*Assuming: 4-5 uses per day
1.5-5.5 Amp draw
2 min. cycle time*

Don't worry about overload! If the moss/coir mixture is too thick, the fuse may pop. Wait about 10 minutes and the fuse will reset.

POWER

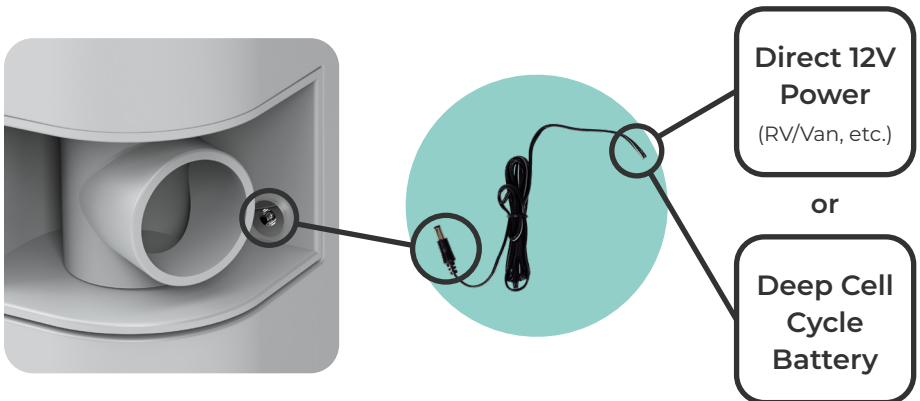
If you have access to 240 V (optional - sold separately)

Plug one end of the adapter into a wall outlet, and the other end into the small power jack (5.5 x 2.5 mm jack) on the back of the toilet.



If you only have access to 12V (provided in box)

Plug the power end of the cord into the power jack on the back of the toilet and use the open leads to wire directly to your power source. The wire with the '**positive**' label on the insulation is the positive wire and the other is the negative.



*Note: The positive lead is always labeled correctly, so make sure to wire the positive with the wire labeled as 'positive'.

VENTING

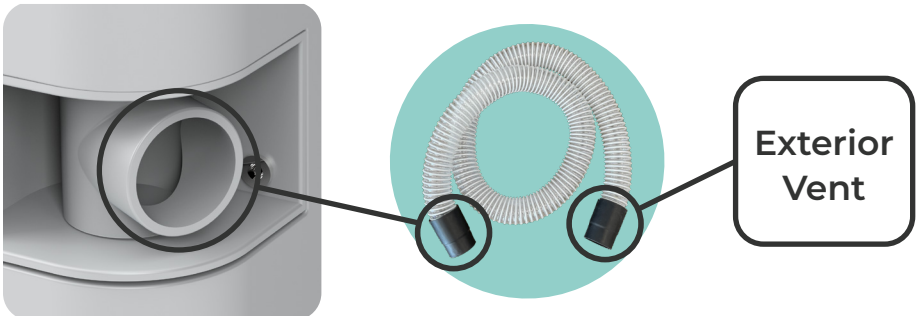
INSERT SWAPS

The inserts for the venting/power and inlet filter can be swapped depending on which direction your power source/venting capabilities are coming from. Pop out the insert from the inside of the toilet, and pop them back in on the desired side.



VENT HOSE

Your OGO comes with a **1.5m vent hose** that has black adapters on each end. These hose ends fit a **32mm PVC pipe**. Place one end of the hose on the T-bar that's on the back of the toilet. The other end will attach to your exterior venting capabilities.



HOW TO USE

Setting up the Compost Medium

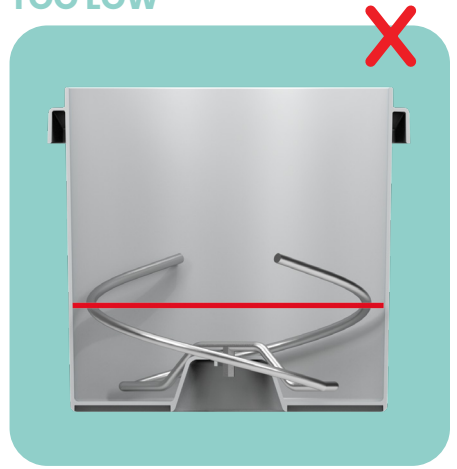
- Coco Coir
- Sphagnum Peat Moss

Fill bin to slightly below the proper fill line with your medium of choice. Add water until it is wet to touch and allow the agitator to fluff the medium until it meets the proper fill line.

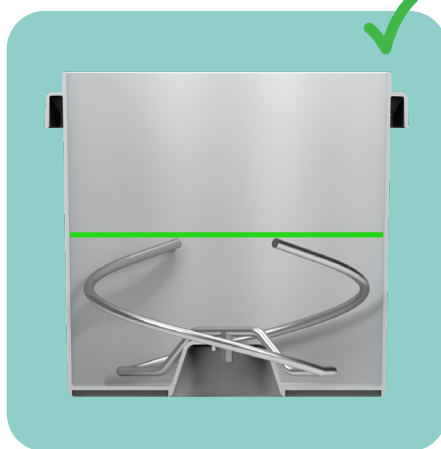
TOO FULL



TOO LOW



PROPERLY FILLED



URINATION

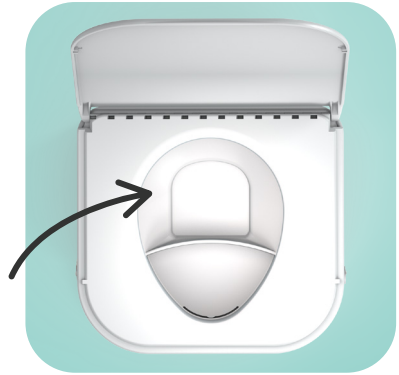
- Urine bottle holds just over **9 liters** of liquid

AIM URINE HERE



The urine funnels to the bottle below. Men should sit while using the toilet.

KEEP TRAP DOOR CLOSED



Even if some urine gets into the trap door area, it will still properly funnel into the bottle below.

SPRAY TO CLEAN BOWL



Spray bowl with Compost Toilet Cleaner Stimulant or with a mixture of water and white vinegar.

SEE LIGHT ON BUTTON



The button that starts the agitator also lights up when the urine level is ready to change.

URINE DISPOSAL

LIFT BOWL SLIGHTLY



ROTATE DRAWER LATCHES



PULL DRAWER OUT

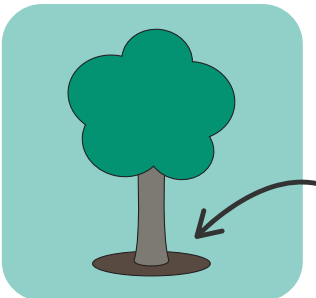


LIFT URINE BOTTLE OUT



The bowl must be lifted slightly
to pull the drawer out

EMPTY BOTTLE



Empty either down the drain
or on a mature tree outside

SOLIDS USE

- Motor runs for **2 minutes**
- Solids bin has a capacity of **25-30 uses** before needing changed

OPEN THE TRAP DOOR



Handle must be pulled **straight** forward.

CLOSE WHEN DONE



Handle must be closed in the same way: **straight** back.

PUSH BUTTON TO MIX



Button activates the motor and spins the agitator bar for 2 minutes to mix the bin contents.

SPRAY TO CLEAN BOWL



Spray bowl with Compost Toilet Cleaner Stimulant or with a mixture of water and white vinegar.

SOLIDS DISPOSAL

LIFT BOWL & PULL DRAWER



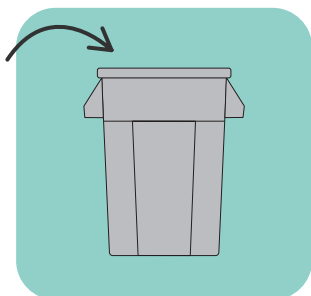
Lift bowl all the way up

PULL SOLIDS BIN



Pull bin from either the top or the front

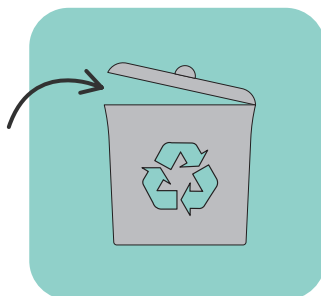
EMPTY IN TRASH



First, put bin contents into a trash bag

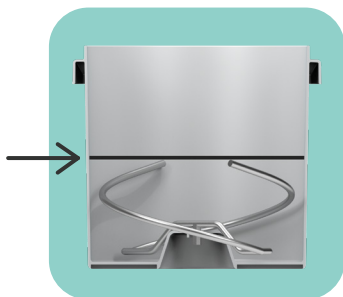
EMPTY IN COMPOST BIN

or



6-12 months of compost

REFILL SOLIDS BIN



Fill bin to fill line with peat moss or coco coir

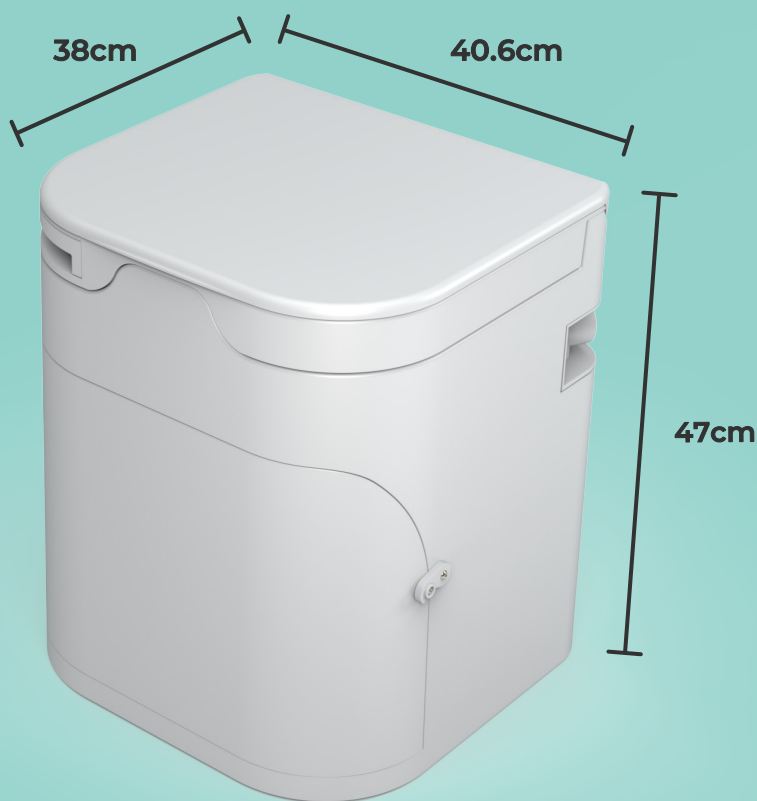
REPLACE SOLIDS BIN



Place bin so stir rod mounting bolts are facing the front

TECH SPECS

The toilet is **38cm deep** by **40.6cm wide** by **47cm tall**. It weighs about **13kgs**.



ogotoilet.com.au
info@enviropo.com.au

